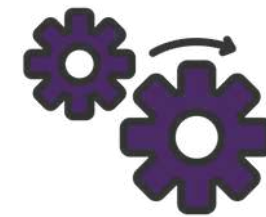


# Preclinical CRO in cancer research

Your partner for in vitro and in vivo services in oncology



# Our Strengths



## OUR VERSATILITY

Reactivity, adaptability and flexibility



## OUR PERSONALIZED ADVICE

An Advisory Board of clinical experts to understand your needs and projects.



## SECONDARY RESISTANCE MODELS

Established and characterized through RNAseq and immunophenotyping of the tumor microenvironment.



## OUR COMPETITIVE PRICES

To provide our customers with excellent value for money

## Company

Created in May 2015,  
with 10 dedicated collaborators



## Team

Scientists recognized for their  
expertise in onco-pharmacology  
at the international level



## Location

BioParc Rockefeller  
Bâtiment Bioserra 2  
Lyon, FRANCE



## Customers

- French and international
- Pharmaceutical,  
biotechnology companies
- Academic institutions



## Regulation

- CIR agreement 2020-2025
- Fully authorized animal  
house and personnel



## Track-record

- 300+ studies
- 60+ sponsors
- 6 collaborative projects (Eurostars...)



# Who we are

Spin-off of an academic Team  
from the Centre de Recherche  
en Cancérologie (CRCL)



10 years-old company  
specialized in proof-of-  
concept studies in oncology

# In vitro services

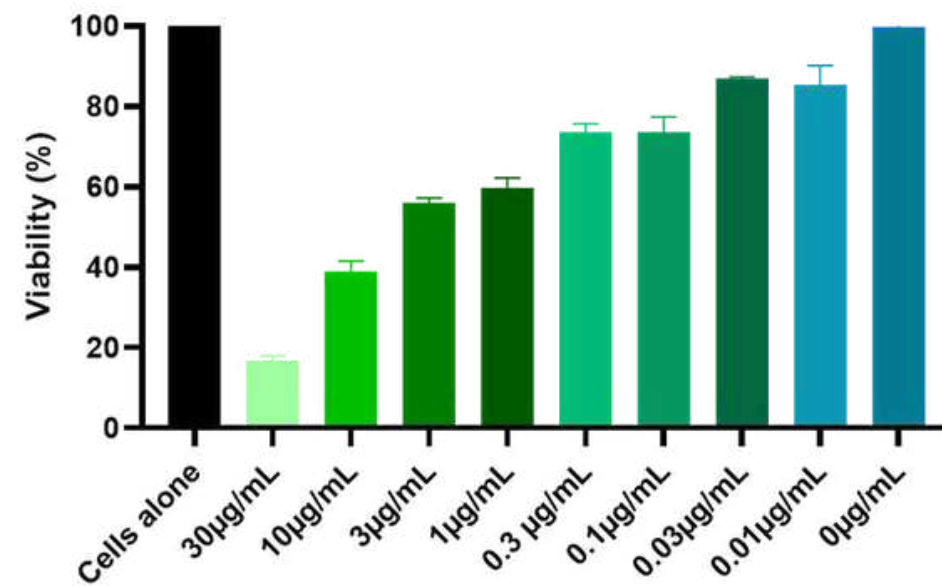


## Cytotoxicity

- Determination of IC50 / EC50
- Continuous-monitoring studies

### CYTOTOXICITY STUDY OF ADC IN A TONGUE SQUAMOUS CARCINOMA CANCER LINE

Luminescence method



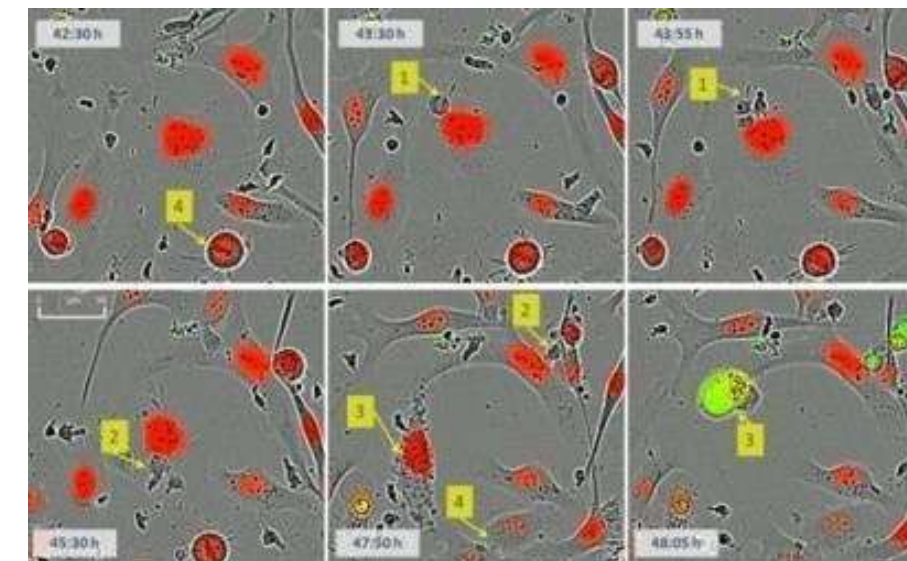
## Splenocytes activation



## Immune cells activation

- ADCC and ADCP assays
- T cell activation by IFN $\gamma$  measurements
- CDC, myeloid cells based assays...

### ADCC ASSAYS WITH FRESH NK CELLS



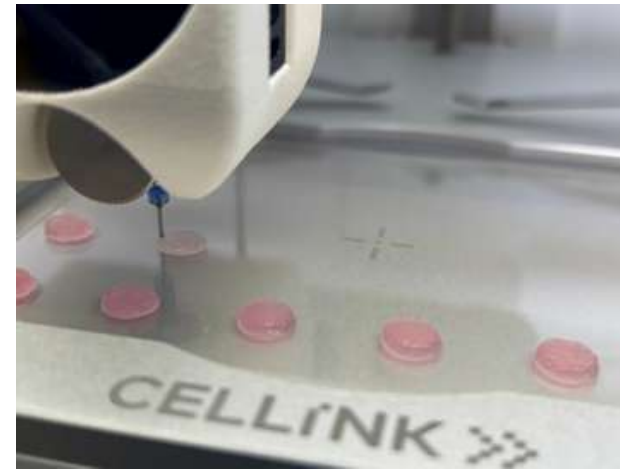
## Flow cytometry analysis

(Antibody-based immunotherapies)

- Internalization assay
- Binding assay
- Bystander effect...

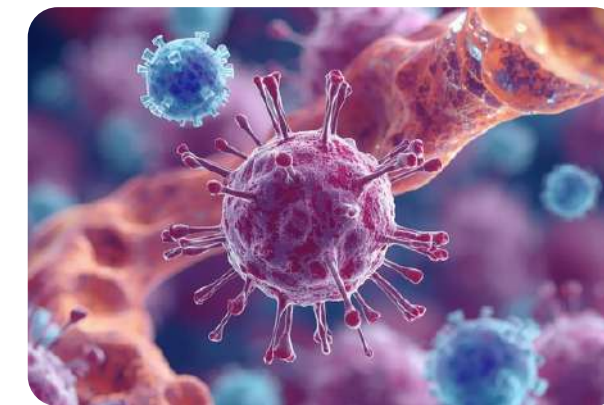
# 3D bioprinting services

## BIO X Bioprinter



The bioprinted 3D models measure  $8 \times 8 \times 1.23 \text{ mm}^3$ , ensuring reproducibility and comparability of results.

## 3D models to better mimic tumor responses :



### CELL VIABILITY

Assessing live cell populations in tumor models.



### PROLIFERATION

Monitoring growth rates of various cell types.

## Advanced Applications of 3D Models :



### NK92 INTERACTION

NK92 immune cells infiltrate the tumor model, demonstrating cytotoxicity and interactions that mimic the tumor microenvironment's complexity

### CAF INFLUENCE

Co-culture with CAF reveals treatment resistance, underlining the importance of tumor stroma in cancer progression and therapy response

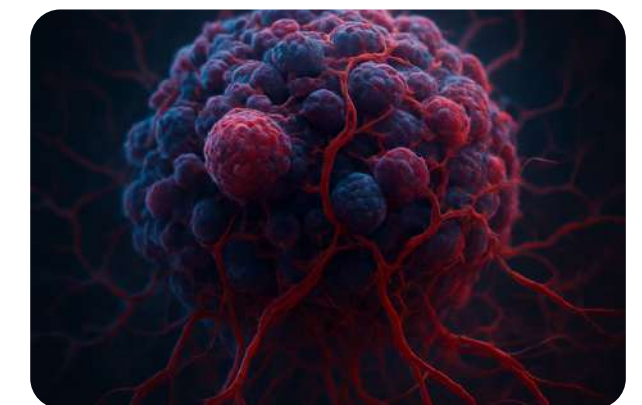
### ADIPOCYTE PROTECTION

Co-culture with adipocytes demonstrates protective effects, revealing critical insights into tumor microenvironment interactions and treatment challenges



### DRUG SENSITIVITY

Analyzing responses to targeted therapeutic agents.



### MULTICELLULAR MODELS

Creating **complex environments** for accurate testing.

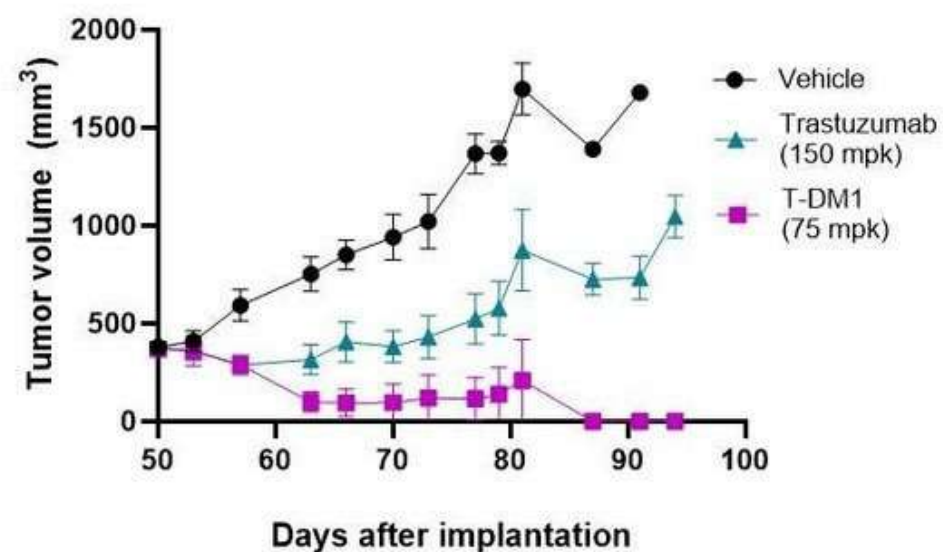
# In vivo services



## Antitumoral efficacy studies

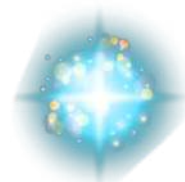
ADC efficacy study in a HER2+ model

Gastric cancer cell line NCI-N87



## Immunophenotyping

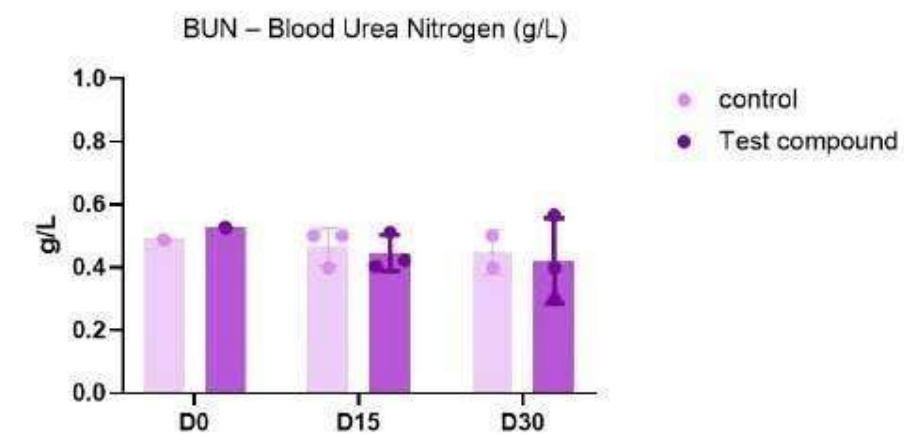
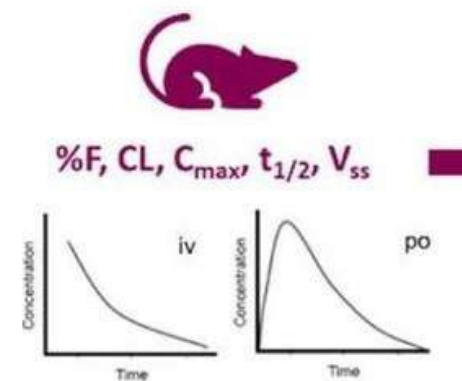
- Characterize the effects of treatment on the tumor microenvironment
- Up to 5 lasers and 29-markers panels
- Off the shelf or customized panels



## Bioluminescence Imaging

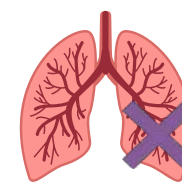


## Toxicity, MTD, PK studies



## Original resistant models

- More than 30 secondary resistant models to standards of care
- Multiple indications : colon, melanoma, breast, pancreas, lymphoma...
- Well characterized (immunophenotyping, RNAseq, histology)



## Pulmonary toxicity

# Contact us for Collaboration and Inquiries



## EMAIL

[contact@antineo.fr](mailto:contact@antineo.fr)  
[marie.tautou@antineo.fr](mailto:marie.tautou@antineo.fr)

## WEBSITE

[@antineo.fr](https://www.antineo.fr)

## PHONE

(+33) 4 72 36 15 71