

■ MCF7 cells

Human MCF7 cells were isolated from the pleural effusion of a patient with metastatic breast cancer.

■ Tumour growth *in vivo*

Subcutaneous implantation of an oestrogen pellet (0.18mg of B-oestradiol) in the left flank and the following day, the cells were collected from a tissue culture flask and injected subcutaneously in the right flank of SCID/CB17 mice. The resulting tumours were monitored by measuring two diameters with calipers, and extrapolating the volume to a sphere.

The mice bearing MCF7 tumours can be treated by intra-peritoneal, intra-venous, intra-tumoral or subcutaneous injection of the compounds. Per os administration is also possible.

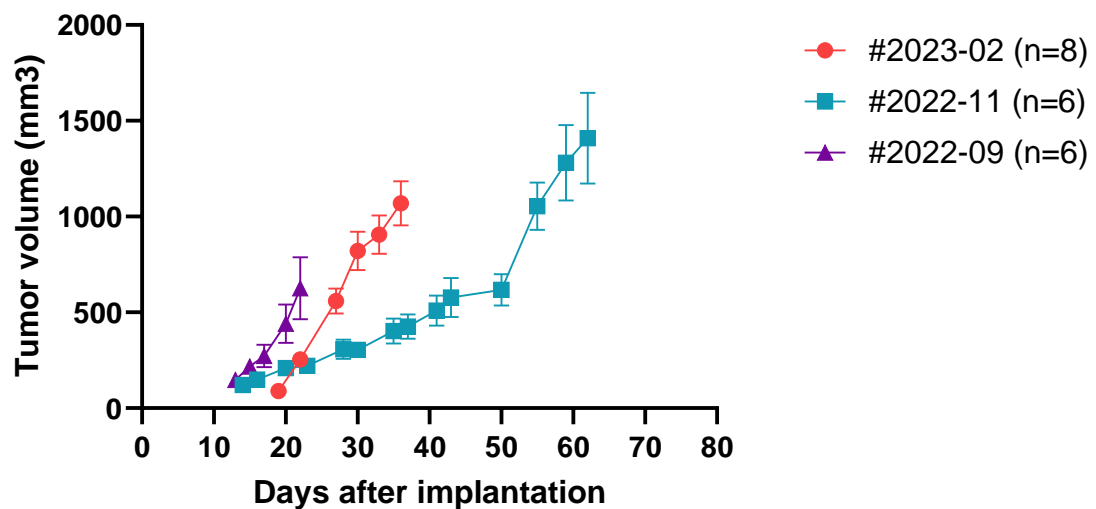


Figure 1: Tumour growth curve of the MCF7 cells as subcutaneous tumours. Mean \pm SEM