

■ DEL cells

Human DEL cells were isolated from a pleural effusion of a patient with malignant histiocytosis.

■ Tumour growth *in vivo*

The cells were collected from a tissue culture flask and injected subcutaneously in the right flank of NSG mice. The resulting tumours were monitored by measuring two diameters with calipers, and extrapolating the volume to a sphere.

The mice bearing DEL tumours can be treated by intra-peritoneal, intra-venous, intra-tumoral or subcutaneous injection of the compounds. Per os administration is also possible.

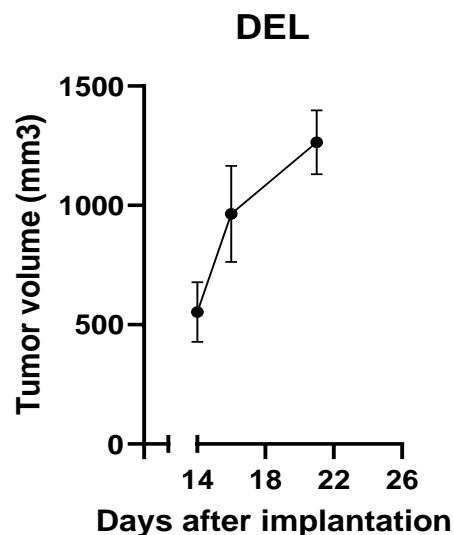


Figure 1: Tumour growth curve of the DEL cells as subcutaneous tumors. Mean \pm SEM (n=3)

■ Luciferase model *in vivo*

Antineo has developed a DEL luciferase positive cell line for tumor growth follow-up with a luminescence imager (IVIS Lumina). The cells were implanted subcutaneously in 3 mice (10×10^6 cells).

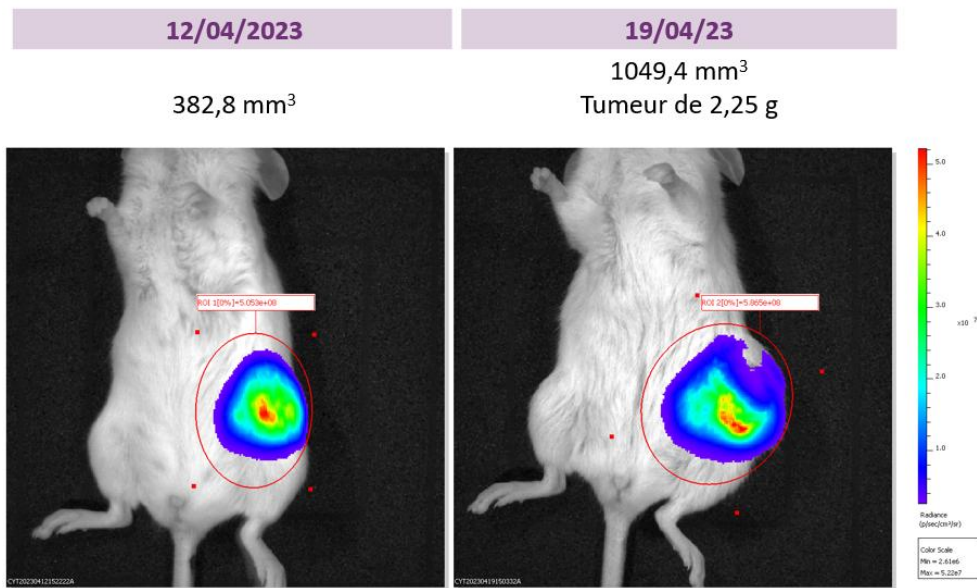


Figure 2: Bioluminescent signal of DEL cells for Mouse 1

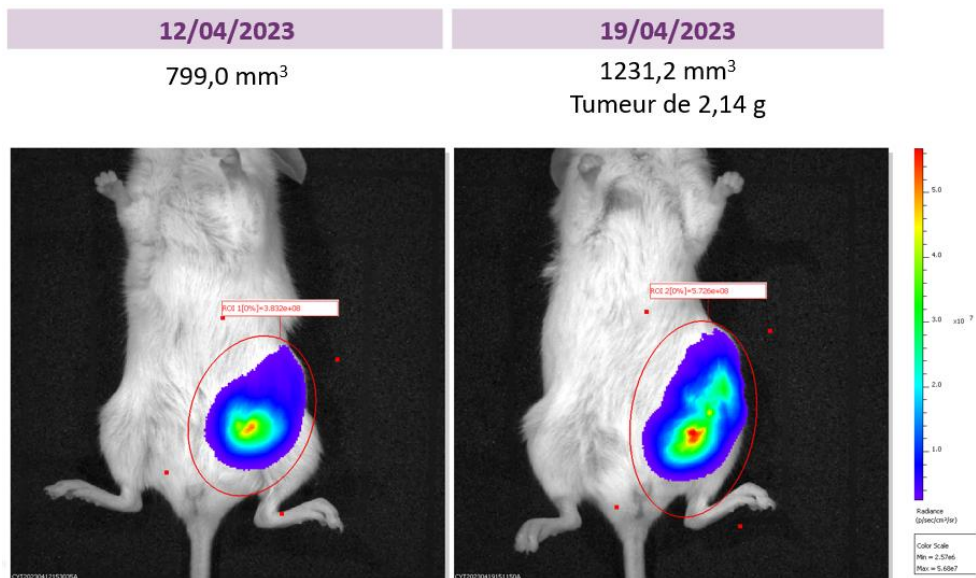


Figure 3: Bioluminescent signal of DEL cells for Mouse 2

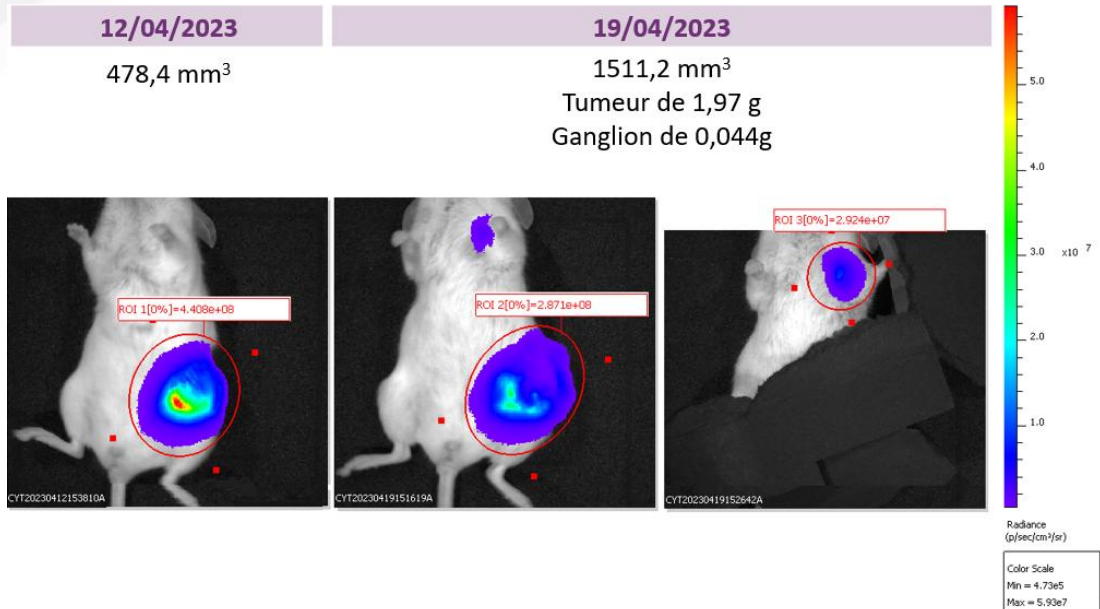


Figure 4: Bioluminescent signal of DEL cells for Mouse 3 (primary tumor and metastasis)