

■ 4T1 cells

Mouse 4T1 cells were isolated from the spontaneous tumour in the mammary gland of a BALB/C mouse with the animal equivalent of a stage IV breast cancer.

■ Tumour growth *in vivo*

The cells were collected from a tissue culture flask and injected subcutaneously in the right flank of BALB/C mice. The resulting tumours were monitored by measuring two diameters with calipers, and extrapolating the volume to a sphere.

The mice bearing 4T1 tumours can be treated by intra-peritoneal, intra-venous, intra-tumoral or subcutaneous injection of the compounds. Per os administration is also possible.

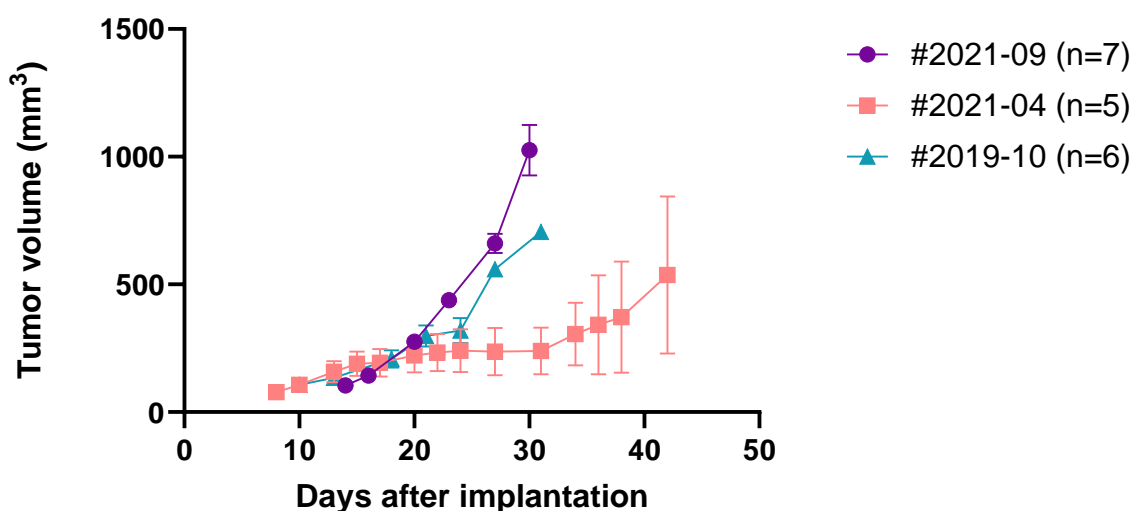


Figure 1: Tumour growth curve of the 4T1 cells as subcutaneous tumours, Mean \pm SEM

Antineo can also implant this model orthotopically.

■ Drug Response - Doxorubicin

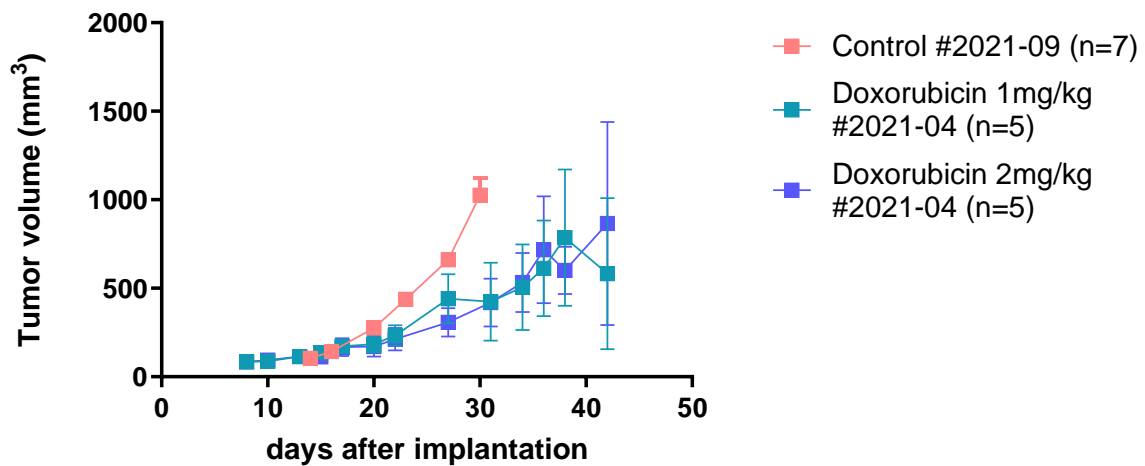


Figure 2: Effect of Doxorubicin at 1mg/kg or 2mg/kg on 4T1 tumour growth, Mean \pm SEM

■ Drug Response – Anti-PD1

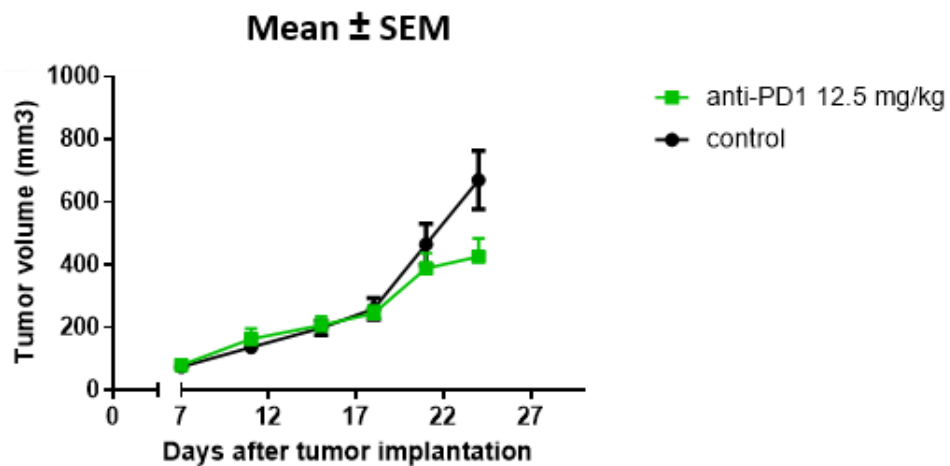


Figure 3: Partial response of Anti-PD1 at 12.5mg/kg on 4T1 tumour growth, Mean \pm SEM

■ Drug Response – Anti-PDL1

Anti-PDL1 12.5 mg/kg \rightarrow no response and toxic

Immunophenotyping data of the lymphoid and myeloid lineage are available upon request.