

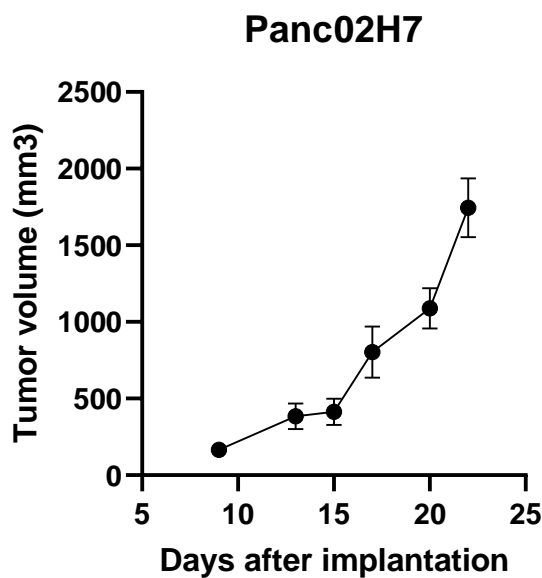
▪ **Panc02H7 cells**

Mouse Panc02H7 cells were isolated from tumors obtained after multiple passages of liver micrometastases following tumor implantation of Panc02 cells in mice. This model is more aggressive than the parental Panc02 model.

▪ **Tumour growth *in vivo***

The cells were collected from a tissue culture flask and injected subcutaneously in the right flank of C57bl/6 mice. The resulting tumours were monitored by measuring two diameters with calipers, and extrapolating the volume to a sphere.

The mice bearing Panc02H7 tumours can be treated by intra-peritoneal, intra-venous, intra-tumoral or subcutaneous injection of the compounds. Per os administration is also possible.



**Figure 1:** Tumour growth curve of the Panc02H7 cells as subcutaneous tumors Mean ± SEM (n=6; take rate 100%)