

▪ **Panc02 cells**

Mouse Panc02 is a well-established mouse pancreatic ductal adenocarcinoma (PDAC) model developed by chemical induction with 3-methylcholanthrene (3-MCA).

▪ **Tumour growth *in vivo***

The cells were collected from a tissue culture flask and injected subcutaneously in the right flank of C57/Bl6 mice. The resulting tumours were monitored by measuring two diameters with calipers, and extrapolating the volume to a sphere.

The mice bearing Panc02 tumours can be treated by intra-peritoneal, intra-venous, intra-tumoral or subcutaneous injection of the compounds. Per os administration is also possible.

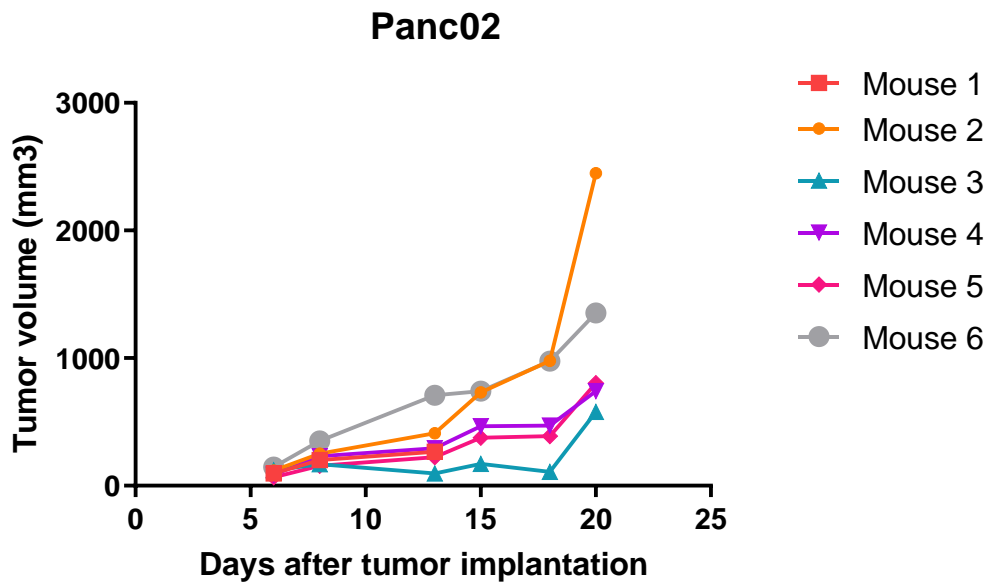


Figure 1: Tumour growth curve of the Panc02 cells as subcutaneous tumors Mean ± SEM (n=6; take rate 100%)