

- **Hs746T cells**

Human Hs746T cells were isolated from human gastric carcinoma and non-malignant tissue.

- **Tumour growth *in vivo***

The cells were collected from a tissue culture flask and injected subcutaneously in the right flank of SCID/CB17 mice. The resulting tumours were monitored by measuring two diameters with calipers, and extrapolating the volume to a sphere.

The mice bearing Hs746T tumours can be treated by intra-peritoneal, intra-venous, intra-tumoral or subcutaneous injection of the compounds. Per os administration is also possible.

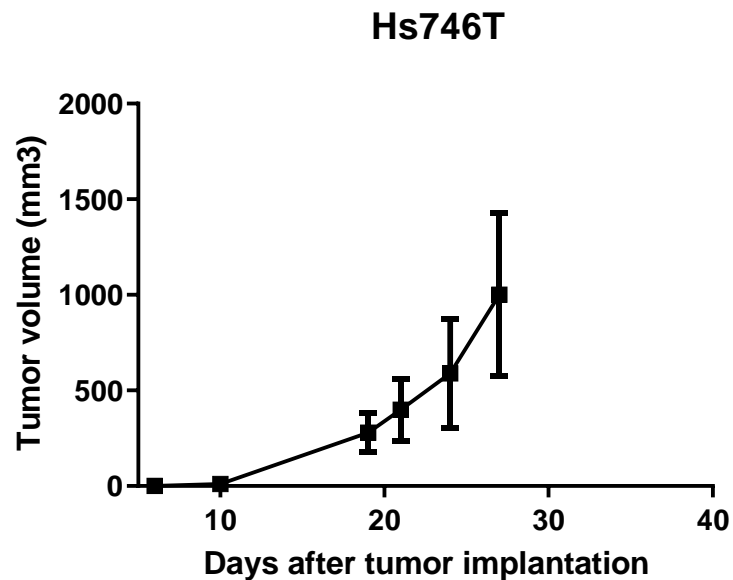


Figure 1: Tumour growth curve of the Hs746T cells as subcutaneous tumors Mean \pm SEM (n=3; take rate 100%)