

- **Hepa1.6 cells**

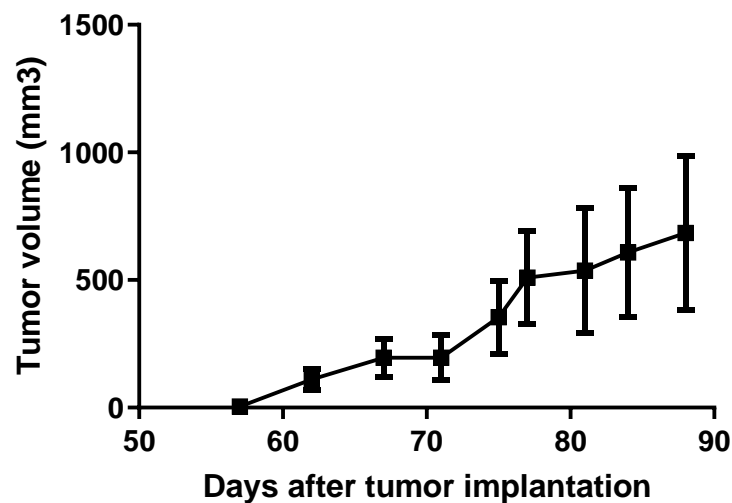
Mouse Hepa1.6 cell line is derived from the BW7756 mouse hepatoma.

- **Tumour growth *in vivo***

The cells were collected from a tissue culture flask and injected subcutaneously in the right flank of C57/Bl6 mice. The resulting tumours were monitored by measuring two diameters with calipers, and extrapolating the volume to a sphere.

The mice bearing Hepa1.6 tumours can be treated by intra-peritoneal, intra-venous, intra-tumoral or subcutaneous injection of the compounds. Per os administration is also possible.

### Hepa1.6



**Figure 1:** Tumour growth curve of the Hepa1.6 cells as subcutaneous tumors Mean  $\pm$  SEM (n=4; take rate 80%)