

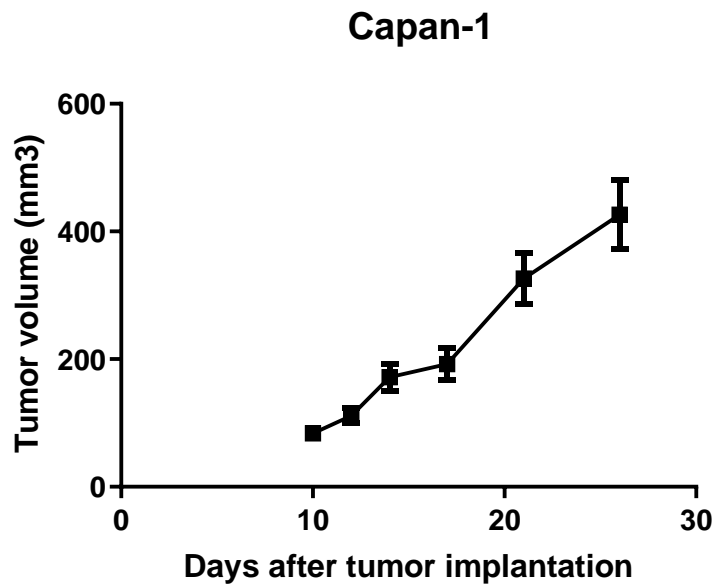
- **Capan-1 cells**

Human Capan-1 cells were isolated from a pancreas of patient with adenocarcinoma.

- **Tumour growth *in vivo***

The cells were collected from a tissue culture flask and injected subcutaneously in the right flank of SCID/CB17 mice. The resulting tumours were monitored by measuring two diameters with calipers, and extrapolating the volume to a sphere.

The mice bearing Capan-1 tumours can be treated by intra-peritoneal, intra-venous, intra-tumoral or subcutaneous injection of the compounds. Per os administration is also possible.



**Figure 1:** Tumour growth curve of the Capan-1 cells as subcutaneous tumors Mean  $\pm$  SEM (n=6; take rate 100%)