

▪ **L1210 cells**

Mouse L1210 cells were isolated from a mouse skin tumour.

▪ **Tumour growth *in vivo***

The cells were collected from a tissue culture flask and injected intraperitoneally in B6D2F1 mice. The resulting tumours were monitored by weighting the mice.

The mice bearing L1210 tumours can be treated by intra-peritoneal, intra-venous, intra-tumoral or subcutaneous injection of the compounds. Per os administration is also possible.

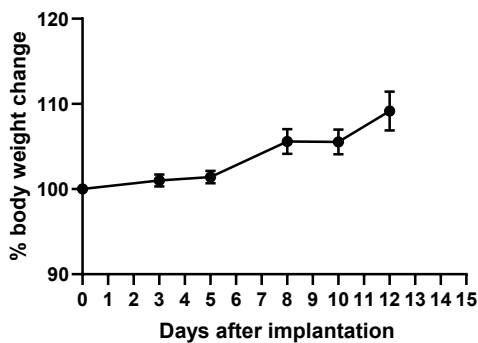


Figure 1: Tumour growth curve of the L1210 cells as ascites tumours - % of weight gain
Mean ± SEM (n=8; take rate 100%)

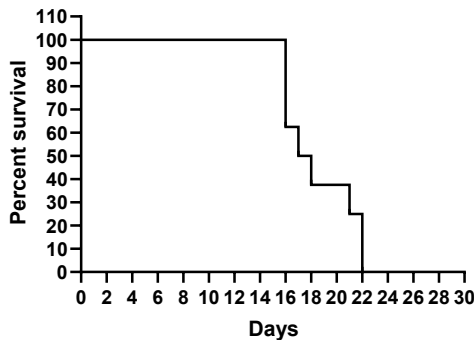


Figure 2: Kaplan-Meier curve for mice implanted with the L1210 tumour model (n=8; take rate 100%)

▪ **Drug Reponses**

Anti-PD1 12.5 mg/kg → no response

Anti-PDL1 12.5 mg/kg → no response