

■ SK-MEL-5 cells

Human SK-MEL-5 cells were isolated from the axillary nodes of a patient with metastatic melanoma.

■ Tumour growth *in vivo*

The cells were collected from a tissue culture flask and injected subcutaneously in the right flank of SCID-CB17 mice. The resulting tumours were monitored by measuring two diameters with calipers, and extrapolating the volume to a sphere.

The mice bearing SK-MEL-5 tumours can be treated by intra-peritoneal, intra-venous, intra-tumoral or subcutaneous injection of the compounds. Per os administration is also possible.

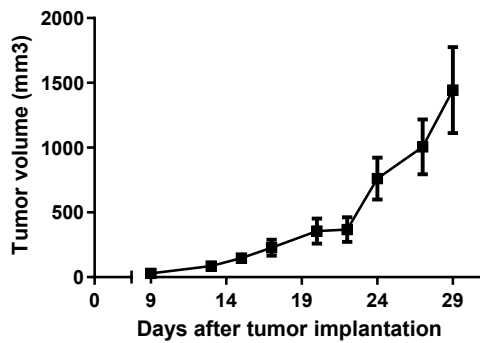


Figure 1: Tumour growth curve of the SK-MEL-5 cells as xenograft
Mean \pm SEM (n=9; take rate 100%)