

▪ MIA PaCa-2 cells

Human MIA PaCa-2 cells were isolated from the pancreas of a patient with pancreatic carcinoma.

▪ Tumour growth *in vivo*

The cells were collected from a tissue culture flask and injected subcutaneously in the right flank of SCID-CB17 mice. The resulting tumours were monitored by measuring two diameters with calipers, and extrapolating the volume to a sphere.

The mice bearing MIA PaCa-2 tumours can be treated by intra-peritoneal, intra-venous, intra-tumoral or subcutaneous injection of the compounds. Per os administration is also possible.

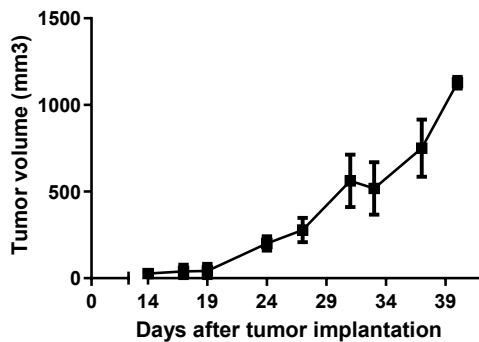


Figure 1: Tumour growth curve of the MIA PaCa-2 cells as xenograft Mean \pm SEM (n=2; take rate 90%)