

■ Isreco-1 cells

Human Isreco-1 cells were isolated from the colon of a patient with colorectal carcinoma.

■ Tumour growth *in vivo*

The cells were collected from a tissue culture flask and injected subcutaneously in the right flank of SCID-CB17 mice. The resulting tumours were monitored by measuring two diameters with calipers, and extrapolating the volume to a sphere.

The mice bearing Isreco-1 tumours can be treated by intra-peritoneal, intra-venous, intra-tumoral or subcutaneous injection of the compounds. Per os administration is also possible.

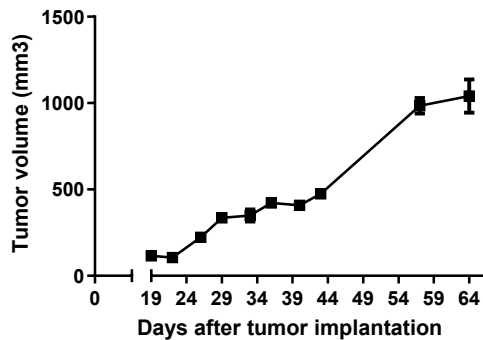


Figure 1: Tumour growth curve of the Isreco-1 cells as xenograft
Mean \pm SEM (n=3; take rate 100%)

Antineo can also perform an intra-caecum implantation.