

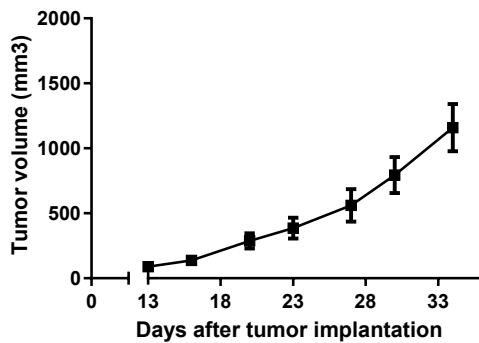
## ■ TDM-8 cells

Human TDM-8 cells were isolated from the bone marrow of a patient with non-hogkin's DLBCL.

## ■ Tumour growth *in vivo*

The cells were collected from a tissue culture flask and injected subcutaneously in the right flank of SCID-CB17 mice. The resulting tumours were monitored by measuring two diameters with calipers, and extrapolating the volume to a sphere.

The mice bearing TDM-8 tumours can be treated by intra-peritoneal, intra-venous, intra-tumoral or subcutaneous injection of the compounds. Per os administration is also possible.

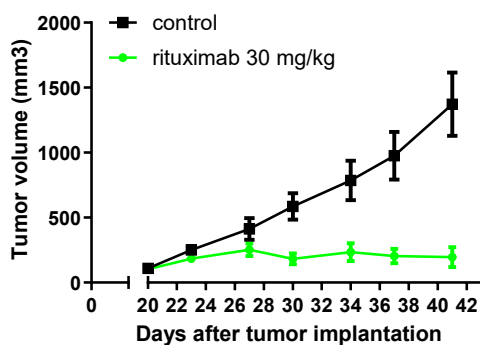


**Figure 1:** Tumour growth curve of the TDM-8 cells as xenograft  
Mean ± SEM (n=10; take rate 100%)

Antineo can also perform an intra-medullar implantation.

## ■ Standard-Of-Care Drug Responses

Rituximab, 30 mg/kg, bi-weekly → Response



**Figure 2:** Effect of rituximab on TDM-8 tumour growth  
Mean ± SEM (n=10 per group; take rate 100%)