

- **SUDHL-4 cells**

Human SUDHL-4 cells were isolated from the peritoneal effusion of a patient with a DLBCL.

- **Tumour growth *in vivo***

The cells were collected from a tissue culture flask and injected subcutaneously in the right flank of SCID-CB17 mice. The resulting tumours were monitored by measuring two diameters with calipers, and extrapolating the volume to a sphere.

The mice bearing SUDHL-4 tumours can be treated by intra-peritoneal, intra-venous, intra-tumoral or subcutaneous injection of the compounds. Per os administration is also possible.

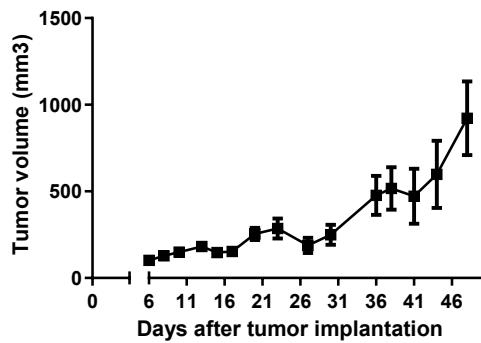


Figure 1: Tumour growth curve of the SUDHL-4 cells as xenograft
Mean ± SEM (n=8; take rate 87.5%)

Antineo can also perform an intra-medullar implantation.