

■ RL cells

Human RL cells were isolated from the ascite of a patient with non-hogkin's follicular lymphoma.

■ Tumour growth *in vivo*

The cells were collected from a tissue culture flask and injected subcutaneously in the right flank of SCID-CB17 mice. The resulting tumours were monitored by measuring two diameters with calipers, and extrapolating the volume to a sphere.

The mice bearing RL tumours can be treated by intra-peritoneal, intra-venous, intra-tumoral or subcutaneous injection of the compounds. Per os administration is also possible.

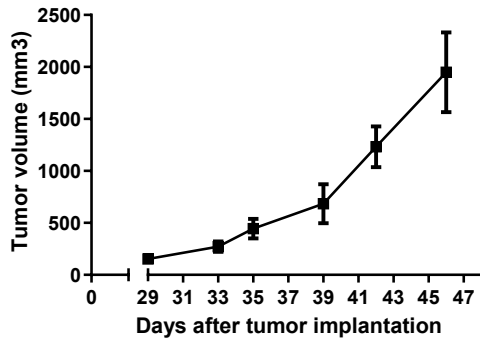


Figure 1: Tumour growth curve of the RL cells as xenograft
Mean ± SEM (n=6; take rate 100%)

Antineo can also perform an intra-medullar implantation.

■ Standard-Of-Care Drug Responses

rituximab 30 mg/kg qw → Response

endoxan 100 mg/kg qw → Response

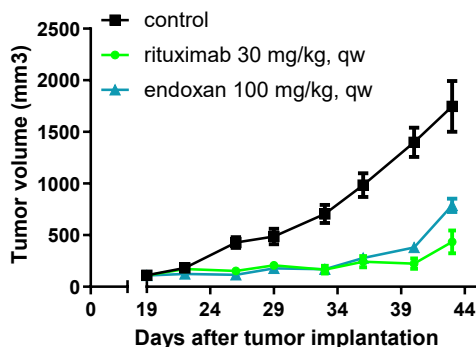


Figure 2: Effect of rituximab or endoxan treatment on RL tumour growth
Mean ± SEM (n=6 per group; take rate 100%)

obinutuzumab 30 mg/kg qw → Response

R-CHOP or R-DHAP → Response

Several RL resistant models, developed *in vivo* without genetic modifications, are available at Antineo (model ID RL rituxR); RL GA101R; RL RCHOPR, RL RDHAPR).