

■ NCEB cells

Human NCEB cells were isolated from the peripheral blood of a patient with non-hogkin's mantle cells lymphoma.

■ Tumour growth *in vivo*

The cells were collected from a tissue culture flask and injected subcutaneously in the right flank of SCID-CB17 mice. The resulting tumours were monitored by measuring two diameters with calipers, and extrapolating the volume to a sphere.

The mice bearing NCEB tumours can be treated by intra-peritoneal, intra-venous, intra-tumoral or subcutaneous injection of the compounds. Per os administration is also possible.

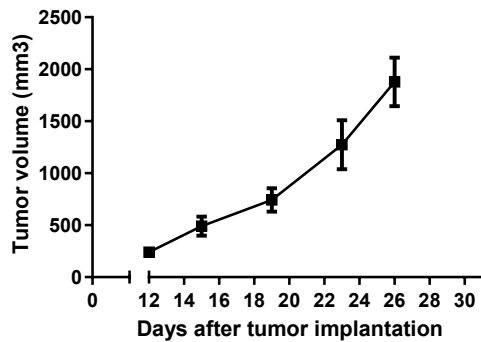


Figure 1: Tumour growth curve of the NCEB cells as xenograft
Mean ± SEM (n=5; take rate 100%)

Antineo can also perform an intra-medullar implantation.

■ Standard-Of-Care Drug Reponses

Rituximab, 30 mg/kg, bi-weekly → Response

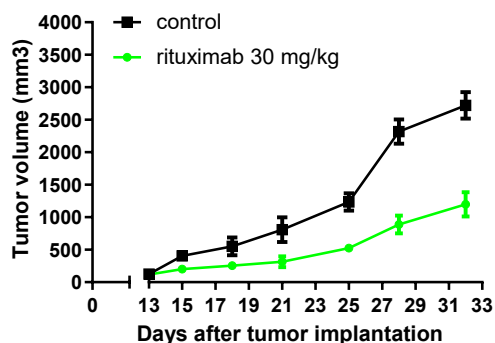


Figure 2: Effect of rituximab on NCEB tumour growth
Mean ± SEM (n=3 per group; take rate 100%)