

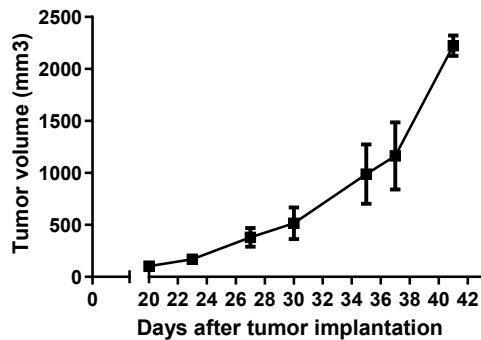
## ▪ ES-moult cells

Human Granta cells were isolated from a patient with non-hodgkin's lymphoma.

## ▪ Tumour growth *in vivo*

The cells were collected from a tissue culture flask and injected subcutaneously in the right flank of SCID-CB17 mice. The resulting tumours were monitored by measuring two diameters with calipers, and extrapolating the volume to a sphere.

The mice bearing ES-moult tumours can be treated by intra-peritoneal, intra-venous, intra-tumoral or subcutaneous injection of the compounds. Per os administration is also possible.



**Figure 1:** Tumour growth curve of the ES-moult cells as xenograft  
Mean  $\pm$  SEM (n=3; take rate 100%)

Antineo can also perform an intra-medullar implantation.